



## GRS Series LED Street Light

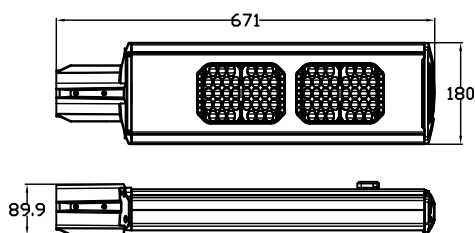
High-efficient LED with Excellent Heat Dissipation  
Creates a first-class light source

By choosing the top brands 5W LED chips, single lumen value up to 200lm/W (@25°C), with the aluminum lamp base and sealed lens, with its excellent heat dissipation, it is as if the LED chip has been placed in a sealed unit. Thus it maintains high brightness levels with very little fading. The sealed lenses are made of strong UV protected PC and are aging and shock resistant; The well optimized light distribution, makes a more uniform illumination and wider lighting area.



# GRS Series LED Street Light

CE | IP66 | IK08



Model	GRS Series LED Street Light
-------	-----------------------------



Physical Parameters	
---------------------	--

Qty. of LED Chips	2×36
Input Voltage (V)	100~240VAC 50~60Hz
Operating Temperature	-20°C~60°C
Net Weight (kg)	4.8
Dimension of Unit (mm)	671×180×90

Light Parameters	
------------------	--

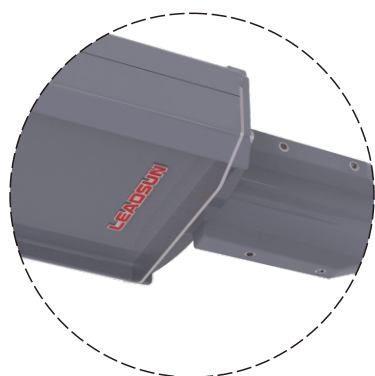
Light Output (W)	10~120
Light Distribution	T2/T3
Visual Angle	140°×70°
Color Temperature (K)	3000K
Dimming Capability	<10%
Typical Luminous Flux (lm)	1600~22437

Packing Parameters	
--------------------	--

Dimension of Carton (mm)*2set	730×235×210
Gross Weight of Package (kg)	10

Mounting Recommendation	
-------------------------	--

EPA (Effective Projected Area) (ft <sup>2</sup> )	0.70
APA (Actual Projected Area) (ft <sup>2</sup> )	0.58
Wind Load Rate (mph)	160
Recommended Installation Height (m)	8~10
Recommended Installation Distance (m)	35~50
Recommended Diameter of arm (mm)	60



House side shields are available as an option

### Bat Wing Light Distribution

The optical lenses independently designed and developed by Leadsun enhance lighting uniformity and coverage, greatly improving lighting performance. Users can select different lenses based on the specific lighting requirements of their scene.

